

SHARE:

[Join Our Email List](#)

[View as Webpage](#)



Reopening Massachusetts

This morning the Baker-Polito Administration released their comprehensive plan to safely reopen the Massachusetts economy, get people back to work, and ease social restrictions while minimizing the health impacts of COVID-19.

WHEN CAN MY BUSINESS REOPEN?

REOPENING: FOUR PHASE APPROACH

FULL REPORT

REOPENING MASSACHUSETTS WEBSITE

General Business Guidance

Information to help businesses meet the self-certification requirement to reopen. All businesses must meet these requirements before reopening. Businesses operating to provide Essential Services, as defined in the Governor's March 23, 2020 Executive Order, updated on March 31, April 28 and May 15, may remain open and have until May 25, 2020 to comply with these mandatory safety standards.

- **COVID-19 control plan template** – Template that satisfies the written control plan requirement for self-certification
- **Compliance attestation poster** – Poster that customer facing businesses are required to print, sign, and post in an area within the business premises that is visible to workers and visitors
- **Employer poster** and **Worker posters** – Posters that businesses can print and display within the business premises to describe the rules for maintaining social distancing, hygiene protocols, and cleaning and disinfecting

Learn more about Reopening Massachusetts

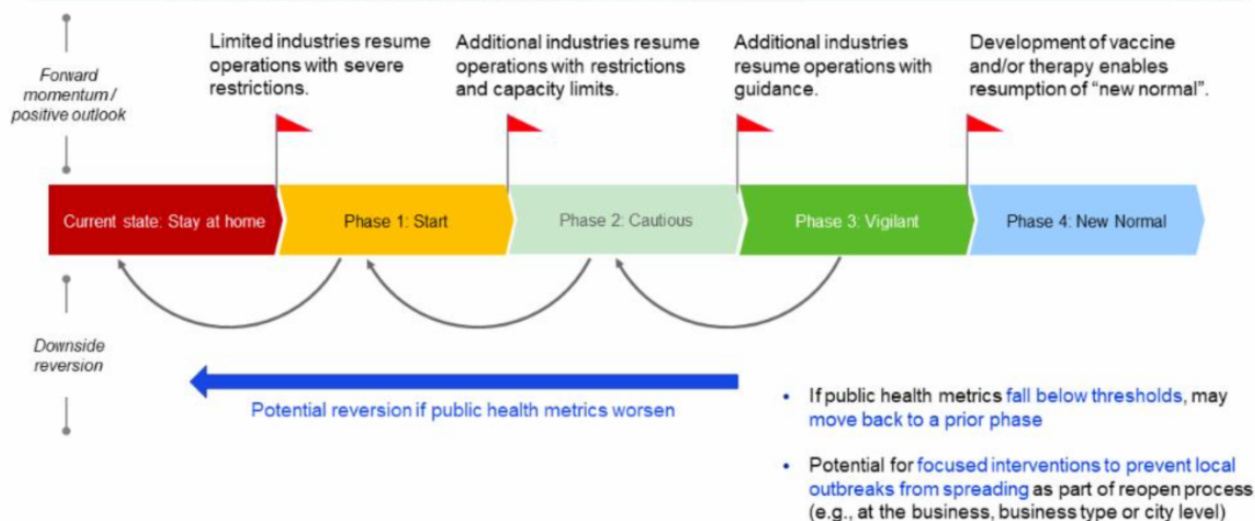
Sector-specific protocols and best practices

Additional guidance

The Reopening Advisory Board



Four-Phase Approach to Reopening Massachusetts



REOPENING MASSACHUSETTS IN PHASES

Phased approach and reopening summary plan (I)

	Current state: Stay at home	Phase 1: Start	Phase 2: Cautious	Phase 3: Vigilant	Phase 4: New normal
Social guidance	As residents of Massachusetts, we are all in this together. Across all phases of reopening, please: Cover your face Wash your hands Socially distance Be vigilant for symptoms Stay home if you feel sick				
High risk populations As defined by the CDC	• High risk should work from home if possible, priority consideration for workplace accommodations	• High risk should work from home if possible, priority consideration for workplace accommodations	• High risk should work from home if possible, priority consideration for workplace accommodations	• High risk should work from home if possible; priority consideration for workplace accommodations (these could be adjusted depending on pending epidemiological evidence)	• Resume public interactions with physical distancing
Gathering size	• Gatherings of <10 people	• Gatherings of <10 people	• To be determined based on trends	• To be determined based on trends	• To be determined based on trends
Travel	• Stay at home advisory • All travelers to MA urged to self-quarantine for 14 days • Lodging restricted to essential workers only	• Safer at home advisory • All travelers to MA urged to self-quarantine for 14 days • Lodging restricted to essential workers only	• Business and recreational travel discouraged • All travelers to MA urged to self-quarantine for 14 days • Lodging open with restrictions	• To be determined based on trends	• Travel resumes, continue to observe social guidance
Most certain					Least certain

Degree of certainty given the progression of COVID-19

	Current state: Stay at home	Phase 1: Start	Phase 2: Cautious	Phase 3: Vigilant	Phase 4: New normal
Workshop	Gathering restrictions	On May 18 open with guidelines, outdoor services are encouraged	Open with updated guidelines, outdoor services are encouraged	Open with updated guidelines, outdoor services are encouraged	Full resumption of activity in the "new normal"
Business	Essential businesses only (Remain open across all phases with guidelines)	<p>With restrictions, some capacity limitations, staggered start:</p> <p>On May 18:</p> <ul style="list-style-type: none"> • Essential business • Manufacturing • Construction <p>On May 25:</p> <ul style="list-style-type: none"> • Lab space • Office space • Limited Personal Services <ul style="list-style-type: none"> - Hair - Pet grooming - Car washes • Retail <ul style="list-style-type: none"> - Remote fulfillment - Curbside pick-up <p>On June 1:</p> <ul style="list-style-type: none"> • Office space: Boston 	<p>Potentially updated guidance for Phase 1 businesses</p> <p>With restrictions and some capacity limitations:</p> <ul style="list-style-type: none"> • Retail • Restaurants* • Lodging* • Additional Personal Services <ul style="list-style-type: none"> - e.g., Nail salons - e.g., Day spas 	<p>Potentially updated guidance for Phase 1 & 2 businesses</p> <p>With restrictions and some capacity limitations:</p> <ul style="list-style-type: none"> • Bars • Arts & Entertainment <ul style="list-style-type: none"> - e.g., Casinos - e.g., Fitness, gyms - e.g., Museums • All other business activities resume except for nightclubs and large venues 	Full resumption of activity (e.g., large venues and nightclubs)

**Restaurant & Hospitality workgroup convened May 15 to develop procedures for opening.*

Most certain Degree of certainty given the progression of COVID-19 Least certain

	Current state: Stay at home	Phase 1: Start	Phase 2: Cautious	Phase 3: Vigilant	Phase 4: New normal
Health and human services	Emergency/emergent needs only, telehealth encouraged	<p>On May 18, hospitals and community health centers:</p> <ul style="list-style-type: none"> Upon attestation can provide high priority preventative care, pediatric care and treatment for high risk patients and conditions <p>On May 25, additional health care providers:</p> <ul style="list-style-type: none"> Upon attestation can provide same limited services as above 	<p>Expand ambulatory in-person routine care:</p> <ul style="list-style-type: none"> Less urgent preventative services, procedures, and care (e.g., routine dental cleanings, certain elective procedures) Day programs (e.g., Adult Day Health, Day Habilitation, etc.) 	Full resumption of activity in the "new normal"	
Recreation and outdoor	<p>Beaches only open for transitory activity with no parking</p> <p>Parks open with no services/facilities</p>	<p>On May 25, can open with guidelines:</p> <ul style="list-style-type: none"> Beaches Parks Drive-in theaters Some athletic fields and courts Many outdoor adventure activities Most fishing, hunting, and boating Outdoor gardens, zoos, reserves and public installations 	<p>Can open with guidelines:</p> <ul style="list-style-type: none"> Campgrounds Playgrounds and spray decks Public and community pools All athletic fields and courts with guidelines Youth sports in limited fashion 	<p>Can open with guidelines:</p> <ul style="list-style-type: none"> Additional activities and services Youth sports with games and tournaments (limited crowd sizes) 	Full resumption of all outdoor recreation and activities
	Most certain	Degree of certainty given the progression of COVID-19			Least certain

E-blast Disclaimer: You are receiving this e-blast as a benefit of membership in the Wellfleet Chamber of Commerce. E-blast ads are available on a first-come, first-served basis for \$35 per blast. The content of the e-blast must relate to your business as a member and be of a non-political content. The information in an e-blast does not reflect the views of the Executive Committee of the Chamber. The Chamber reserves the right to edit messages, as needed.

Wellfleet Chamber



of Commerce

Post Office Box 571, Wellfleet MA 02667
info@wellfleetchamber.com

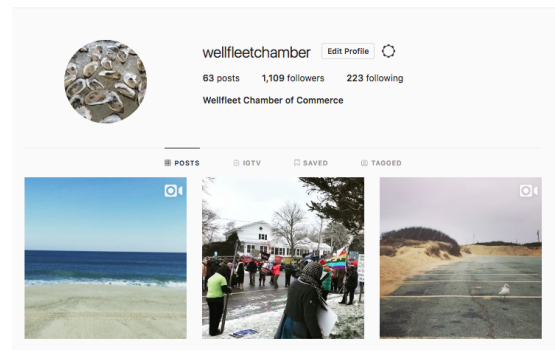
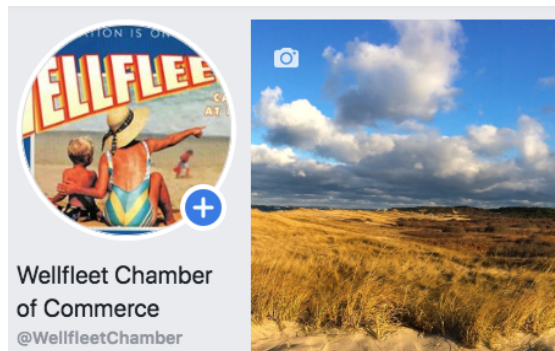
Officers:

President Bob "Moo" Morrill
Vice President Bob McCaffery, [Even'tide Resort Motel and Cottages](#)
Secretary Diane Hall, [Van Rensselaer's Restaurant](#)
Treasurer Brian Anderson, [Seamen's Bank](#)
Lara Henry, [Executive Administrator](#)

Board of Directors:

Todd Barry, [Moby Dick's Restaurant](#)
Molly Galvin Kasakoff, [Community Member at Large](#)
Ken Granlund, Jr, [Mainstay Motel](#)
Steven Lam, [The Furies](#)
Todd LeBart, [The Beachcomber](#)
Sylvia Smith, [CPA](#)
Ted Wilson, [Wellfleet Motel](#)
Martha Wilson, [Pine Moorings Cottages](#)

Would you like your businesses news or promotion to be sent individually? Take advantage of your Wellfleet Chamber of Commerce membership and have us send an E-blast for only \$35. Email info@wellfleetchamber.com for details.



**Visit us on FACEBOOK and INSTAGRAM for updates from Wellfleet
#wellfleetchamber @wellfleetchamber**

